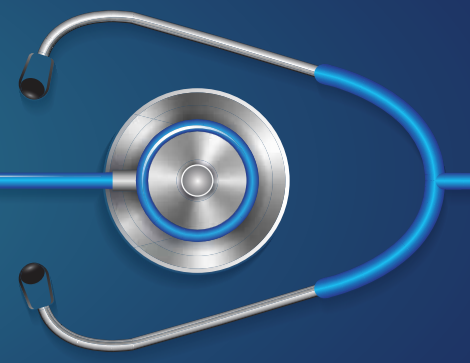


Platinum Health Page



YOUR OPTOMETRY BENEFITS How do they work?

As a member of Platinum Health, you enjoy specific optometry benefits according to your scheme option.

Optometry benefits for PlatComprehensive, PlatCap and PlatFreedom members stretch over a two-year period, calculated from the last date of receiving either your glasses or contact lenses. For example: If you received spectacles or contact lenses in June 2023, you will only qualify for new spectacles/contact lenses in June 2025. You will only be able to submit further claims when your two-year period has lapsed.

To view your Optometry benefits as per your scheme option

[Click here](#)



ARE YOU RETIRING SOON? Here's what you need to do to continue membership with Platinum Health

If you are at retirement age as per your employer agreement, you and your dependents can stay on Platinum Health as continuation members.

Once you have taken the decision to go on retirement, you need to notify the scheme whether you want to continue membership with Platinum Health or terminate membership by completing the Confirmation of medical form. This can be obtained from any of our Client Liaison offices, or you can download it from our website.

To learn more about the process to follow and who to contact

[Click here](#)

AUTISM

Autism spectrum disorder (ASD) affects how people interact with other people and communicate. ASD is related to brain development that impacts how a person perceives and socializes with others, causing problems in social interaction and communication. ASD also includes limited and repetitive patterns of behaviour and a wide range of symptoms of severity.



[Click here](#)

To learn more about the symptoms and treatment for ASD

ONE MONTH WRITTEN NOTICE REQUIRED TO TERMINATE A DEPENDANT

In terms of Platinum Health Medical Scheme (PHMS) Rules, a member who wish to terminate a dependant needs to do so by giving one month written termination notice to the Scheme.

[Click here](#)

To find out what you should do if you want to terminate a dependant, and who to contact for assistance



Defining Neurodiversity and Neurodivergence

Neurodiversity describes the natural way that people think, learn, perceive the world, interact, and process information differently. No two neurodivergent people are exactly alike. Thus, each neurodivergent person will bring a different set of skills and talents to the workplace and have different access and support needs.

[Click here](#)

To learn more about Neurodiversity



DID YOU KNOW ?

You can browse our website for **FREE**. If you use a device with a SIM card, you can view the articles included in this PH Page for free. If you use a device without a SIM card, you will incur normal data costs.

